

Excretory System

State whether the following statement is true or false.

1. The urinary bladder can stretch like a balloon.

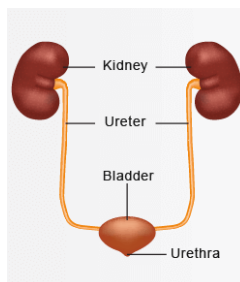
- True
 False

Choose the correct answer.

2. Which of the following systems of the body removes excess and unnecessary fluids from the body?

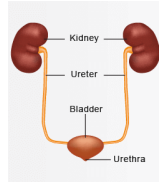


Circulatory system

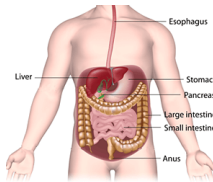


Excretory system

3. Which one of the following systems of the body works with the lungs, skin, and the intestines to control the balance of water and chemicals in the body?

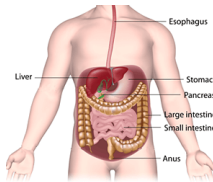


Urinary system

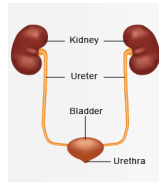


Digestive system

4. Which of the following systems is responsible for producing, storing, and eliminating pee which is released by the kidneys?



Digestive system



Urinary system

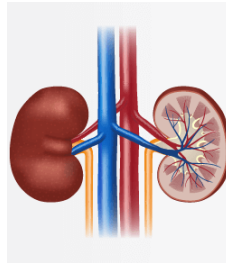
5. Which of the following systems includes the kidneys, lungs, liver, and skin?

- Circulatory system
- Excretory system

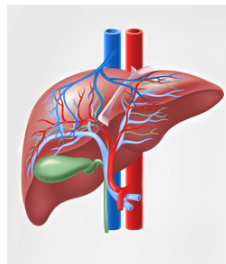
6. The excretory system controls and balances the amount of water and _____ in the body.

- blood
- salts

7. Which of the following is the main organ of the excretory system and is responsible for removing wastes from the blood, as well as salt and excess water?

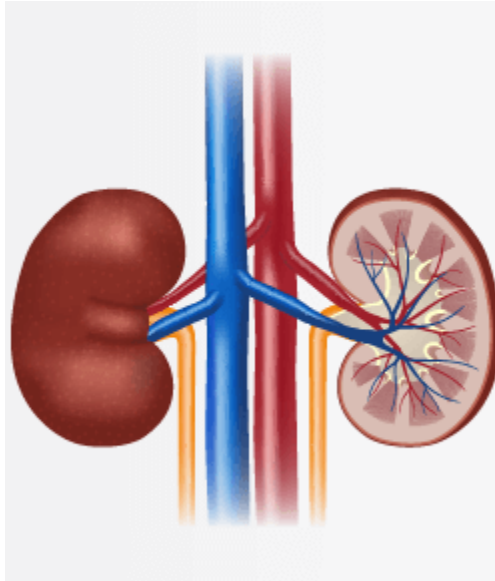


Kidneys

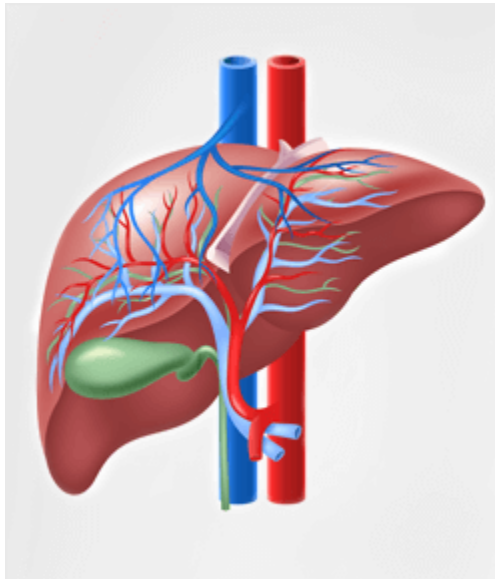


Liver

8. Which of the following organs of the excretory system is responsible for breaking down chemicals, poisons, and other toxins that may enter the body?

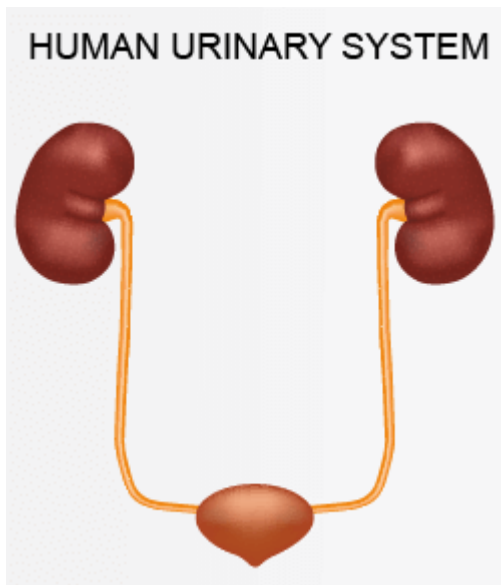


Kidneys



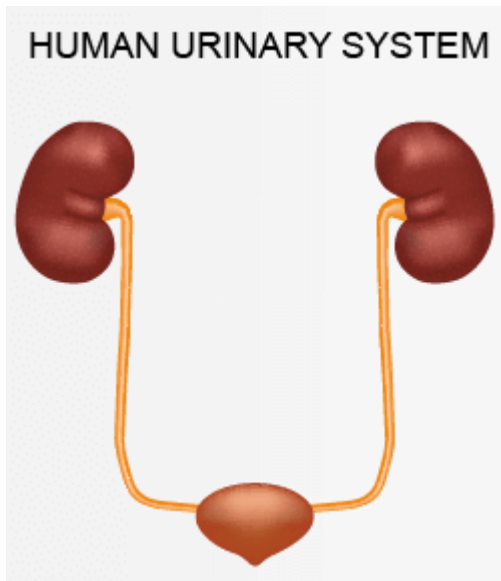
Liver

9. Once urine is released by the kidneys it then travels through very thin tubes called _____.



- Urethra
- Ureters

10. Which of the following is the tube urine travels through prior to urination taking place?



- Urethra
- Ureter

State whether the following statement is true or false.

11. Before urine is released from the body, it is made by the liver by removing wastes and excess water from the blood.

- True
- False

Choose the correct answer.

12. Which of the following tells the location of the kidneys in the human body?

- Between the lungs just to the left side of the middle of the chest cavity.
- Below the ribcage in the middle of the back.

13. When a person's urinary _____ is full, the person normally must urinate to eliminate waste from the body.

- muscle
- bladder

14. Which of the following is the tube that allows urine to pass outside of the body?

- Ureter
- Urethra

15. How much urine can the typical urinary bladder hold before the brain signals a person that it needs to be emptied?

- Up to 16 ounces
- Up to 5 ounces